

Configure your own DNS

How to configure your own DNS

1. Configure DNS in MB

Connect your computer to MB8000. Make sure the MB8000 is dial-up successfully. Login the web configuration page of MB8000 to setup your own DNS.

Set the “DNS Relay Status” to disable.

- Set the “Primary DNS IP Address” as “xxx.xxx.xxx.xxx”. (e.g.68.94.156.1)This parameter represents the IP address of the primary DNS server.
- Set the “Secondary DNS IP Address” as “xxx.xxx.xxx.xxx”. (e.g.68.94.157.1)This parameter represents the IP address of the secondary DNS server.

The screenshot shows the 'Local IP Configuration' page of the MB8000 web interface. It is divided into three sections: IP Configuration, DHCP Server, and DNS Configuration. At the bottom are 'OK' and 'Cancel' buttons.

Section	Field	Value
IP Configuration	Local IP Address:	172.16.0.1
	Local IP Mask:	255.255.0.0
DHCP Server	DHCP Server Status:	Enable
	Start IP Address:	172.16.0.2
	Width of IP Address:	200
	Default Lease Time:	86400
	Maximum Lease Time:	864000
DNS Configuration	DNS Relay Status:	Disable
	Primary DNS IP Address:	68.94.156.1
	Secondary DNS IP Address:	68.94.157.1

Figure 1

Opening a “Command Prompt” window in your computer. Once the window appears, type “ipconfig /renew” to obtain a new DNS IP address.

Note:

You should configure your own DNS in every time MB8000 re-dial.

2. Configure DNS in Laptop

Connect your computer to MB8000. Verify your computer is set with “Static IP” configuration. Go to “Start” then to “Settings”, then to “Network and Dial-up Setting” and then right click on your “Local Area Connection”. You should see the window shown in Figure 2.

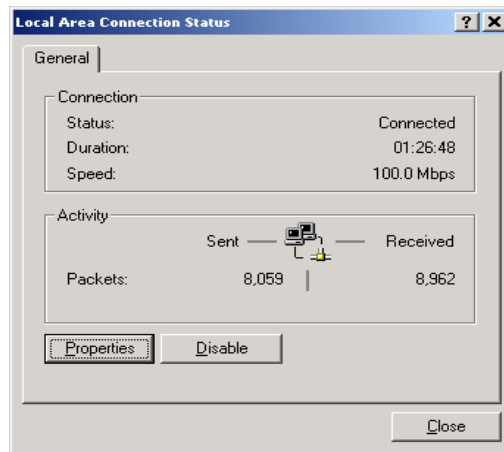


Figure 2

Click on the “Properties” button and the window as shown in Figure 3 appears.

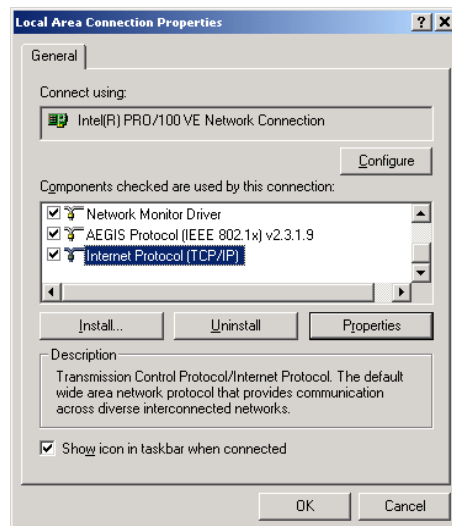


Figure 3

Scroll down in the properties window until you see “Internet Protocol (TCP/IP)” and highlight it

by clicking on it and then click the “Properties” button. You should see the window shown in Figure 4. Verify the “Use the following IP address” is set then enter the IP address/Subnet mask and configure MB8000 as the default gateway. Verify the “Use the following DNS Server addresses” is set then enter the Preferred DNS Server and Alternate DNS Server. Click the “OK” button.

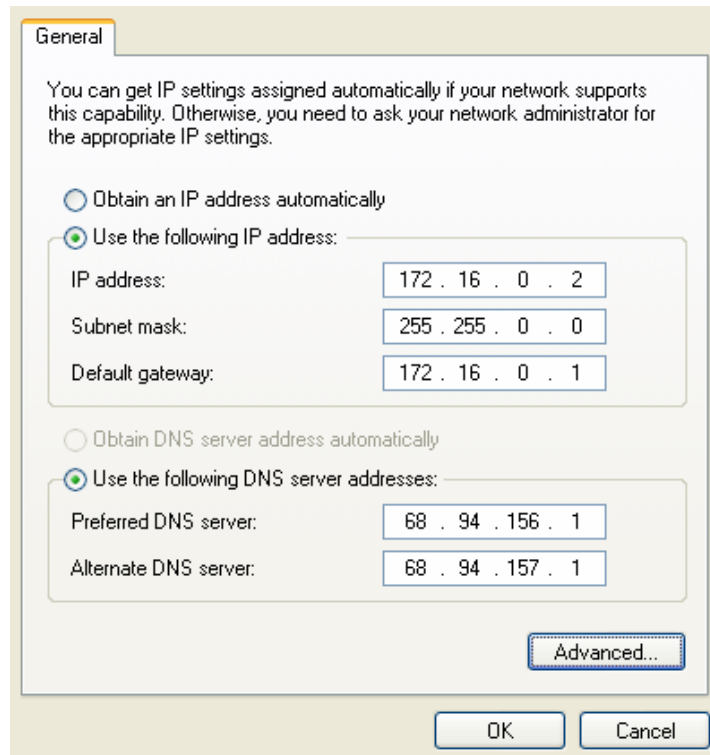


Figure 4