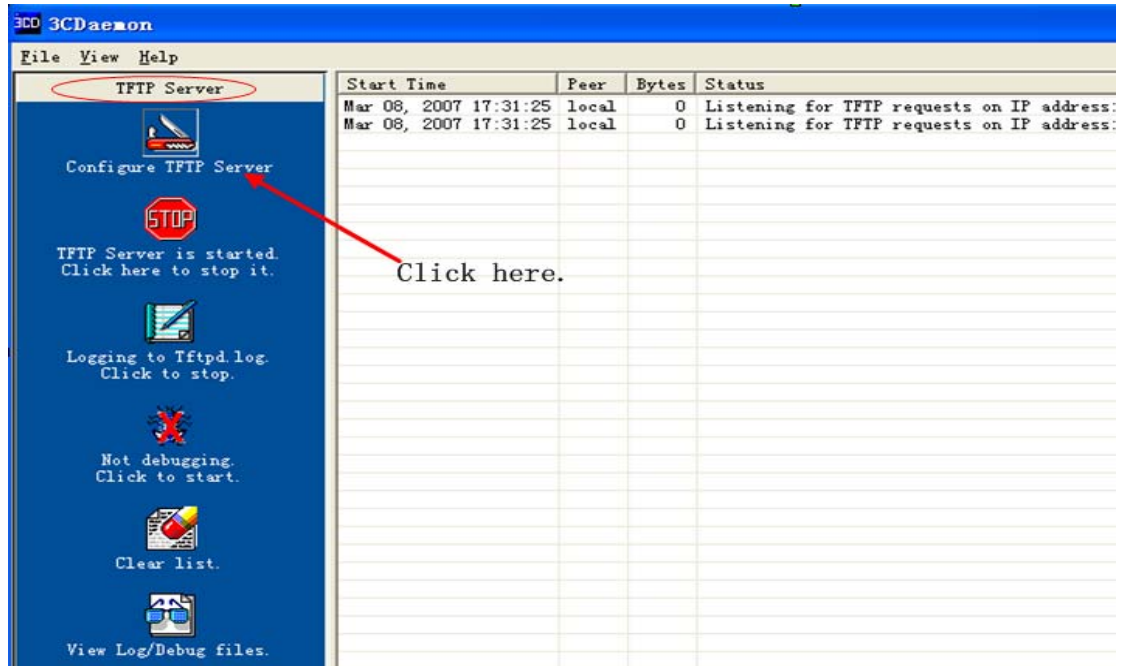
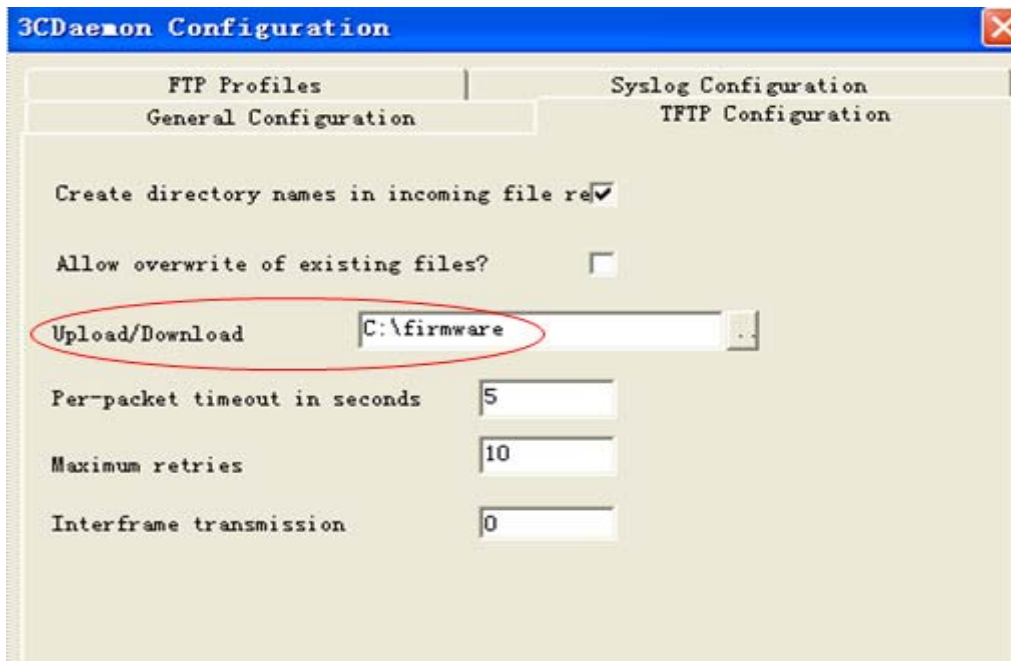


1. Get a desired MB6000 firmware from [Top Global](#). Rename the firmware to firmware.bin and put it in a folder, for example, C:\firmware.
If the firmware you get from Top Global is a .zip file, please don't forget to extract it.
2. Download TFTP server [3cdv2r10.zip](#)(Click to download) from the Internet.
3. Install this software.
4. Change your IP address to 172.16.0.2.
5. Run the TFTP server and click the "Configure TFTP Server".



6. And then input the path where you put the firmware in "Upload/Download" field.



7. Click "OK" to save.
8. Follow the instruction in "How to Force Reload MB6000.pdf" to finish the whole procedure.